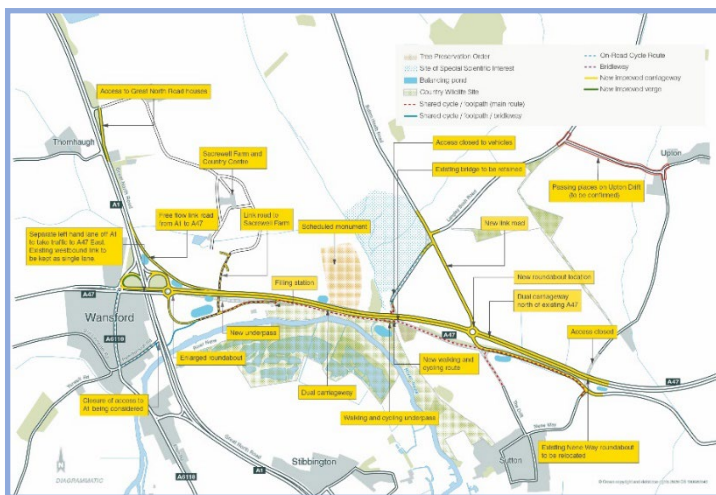


A47 Wansford to Sutton dualling scheme

Quarterly newsletter
October 2023

Progress on our A47 Wansford to Sutton dualling scheme



Our A47 Wansford to Sutton dualling scheme is part of a multi-billion-pound investment by the government aimed at improving journeys on England's major A-roads. As part of this programme, our Wansford scheme has been granted Development Consent Order (DCO), which is a special type of planning permission from the Planning Inspectorate. The section of this road is approx. 1.6 miles long, located west of Peterborough between the existing junction with the A1 and the Nene Way roundabout near Sutton.

Our works will involve upgrading the A47 between Wansford and Sutton from a single carriageway to a dual carriageway. This will also include a new free-flow link road from the A1 southbound to the A47 eastbound, roundabout improvements, along with an enhanced route for walking, cycling and horse riding.

We aim to keep the public informed via, public information events that were held in June 2023 and would also like to provide a local newsletter for scheme updates.

This is the first edition of a regular newsletter, which we will provide to our stakeholders and customers four times a year to keep you updated on the progress of this scheme.

Update

We've scheduled to begin advanced work, such as site exploration, utility diversions, fencing, and vegetation clearance, starting in early November this year. These activities will continue for a few months.

For more information, please email a47news@gallifordtry.co.uk



Our environmental management

We continue to promote conservation, protection, and improvement of the environment within the scheme, and have identified practical steps we can take to reduce the scheme's environmental impacts.

In order to fulfil the requirements of the development consent order, we aim to:

- Provide protected species with new habitats in woodland areas
- Install new bird and bat boxes on existing trees and nesting banks
- Ensure heritage and archaeological sites are carefully excavated, recorded, and understood
- Planting native trees, hedgerows and wildflowers will protect and enhance the local wildlife and will help to blend the road into the landscape
- Using fences to protect wildlife and providing safe crossings using a mammal tunnel

We will also continue our works with the Environment Agency, Natural England, Historic England, and Peterborough City Council to ensure that all our work complies with current environmental rules and regulations.

Pre-construction environmental surveys

To manage and protect the habitats we are working alongside and to ensure the safety of our teams, we have conducted pre-construction environmental surveys. So far, we have conducted the following surveys:

- Water monitoring.
- Surveys for protected species and invasive plants.
- Ecological checks to ensure there are no nesting birds.
- Preserving wildlife is important to us, so we are installing 17 bat boxes across our scheme to provide new habitats.

For more information, please email a47news@gallifordtry.co.uk.



Social Value and work in our local community

As a team, we are eager to work and make a positive impact in the communities we serve. We do this in a variety of ways, including:

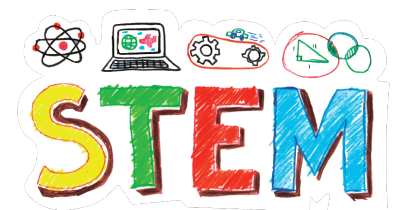
- Planting projects
- Litter picks



We are committed to recycling materials used on site. We are looking for initiatives where we can provide support to local schools by donating wood from felled trees or other materials available on site.

Supporting future careers

We have collaborated with several local schools in the Peterborough area to assist them in their STEM (Science, Technology, Engineering, and Maths) career and curriculum objectives.



Additionally, we have provided support for careers fairs, conducted CV writing workshops, and offered one-to-one guidance for young people pursuing careers in the construction industry.

Our work with HMPPS (Her Majesty's Prison and Probation Service) and prison leavers

We are also working alongside HMP Peterborough to explore ways in which we can assist prison leavers in finding full-time employment after their release.

As a team, we offer monthly support in the following areas:

- Writing CVs
- Providing career guidance and support
- Assisting with job hunting
- Improving their presentation skills
- Facilitating mentoring circles

To date, we have engaged with more than 30 prisoners, and we will continue our efforts throughout the entire construction timeline.

For more information, or if you wish to get us involved with your event, please email a47news@gallifordtry.co.uk

Queries or concerns about the schemes

Please contact us using the following options:

Emails: A47wansfordtosuttonRIS@nationalhighways.co.uk

Telephone: 0300 123 5000

Post: National Highways, Woodlands, Manton Lane, Bedford, MK41 7LW.

Visit: www.nationalhighways.co.uk/our-roads/east/a47-wansford-to-sutton-dualling

Twitter: [@HighwaysEAST](https://twitter.com/HighwaysEAST)

Facebook: [@HighwaysEAST](https://www.facebook.com/HighwaysEAST)

Do you know someone who may want to receive this newsletter?

Email a47news@gallifordtry.co.uk and we will add them to our distribution list. If you no longer wish to receive this newsletter, please also let us know using the email.